

IRONWORKS

TOLL FREE: 1-800-669-5613

IRONWORKS RATES; Space available by column inch only, one inch minimum. Rate is \$50 per inch, special typesetting, borders, photo inclusion, blind ads, \$10 extra each. Deadlines: By mail, 15th of month prior to publication. Place your ad toll-free 24 hours a day from anywhere in the USA (except Alaska and Hawaii) 1-800-669-5613 ask for Classifieds 8:30-5 pm CST. After business hours our automatic ad taker will take your ads.

EUREKA! EUREKA! EUREKA!

OWNERS HAVE OVER 30 YEARS COMBINED EXPERIENCE!

We can save you money on Saw Teeth. Hundreds of satisfied customers. Rebuilt Exchange or New. We specialize in rebuilding Koehring 2000, Hurricana, Hydro Ax split teeth and all other brands. Call Jimmy or Niel Mitchell. Quantity Discounts!

NOW ACCEPTING CREDIT CARDS

EUREKA SAW TOOTH CO., INC.

4275 Moores Ferry Rd. • Skippers, Virginia 23879
PH./FAX (day) 1-434-634-9836 or Night/Weekends • 1-434-634-9185

7180

WATERS

International Trucks

65 Hwy 19 North Meridian, MS 39304

1.800.844.1600
www.waterstruck.com

USED EQUIPMENT:

07 Barko 495 ML/CSI 264/Trl. \$75,000
Prentice 210C/ Trl. \$7,500
Demo Dynamic 585 12 hrs \$POR



New 495ML & 595ML's in stock with CSI delimiters and slashers available

MS Dynamic Dealer for the Dynamic Conhead Chipper

Sales: David Sanders
601.917.7131 (cell)
1*57*997 (Southern linc)
dsanders@waterstruck.com

Ronnie Sims 7393
601.479.4679 (cell)
1*57*789 (Southern linc)
rsims@waterstruck.com

Parts: Ryan Shelton
1*57*480 (Southern linc)
rshelton@waterstruck.com

**Top Quality Used Parts
Our Specialty Fair Prices
Customer Satisfaction**



Caterpillar	Tigercat
Franklin	Prentice
Clark	Barko
Timberjack	Husky
John Deere	Kobelco
Tree Farmer	Timberking
Hydro-Ax	

In Business 40 Years

P.O. Box 98 • Moncks Corner
SC 29461 • 843-761-8220
Fax: 843-899-2492

Night Equip. Sales:
Allen Ward — 843-509-0005
Johnny Ward — 843-860-1630

Night Used Parts:
Robert Mullinax — 843-569-3513
Toll Free: 800-845-6648
www.wvtractor.com



1926

OREGON OREGON OREGON OREGON

www.loggingparts.com

Fax: 912-375-0733
Hazlehurst, GA 31539
Office: 912-375-5665

1-800-284-9032

NEW AND USED LOGGING PARTS



OEM & Aftermarket Parts For All Makes

7195

OREGON OREGON OREGON OREGON



JASON WELLS
jwells@striblingequipment.com

(601) 939-1000

STRIBLING EQUIPMENT, LLC

2891

2005 Deere 650JLGP



S/N 115158, 3622 hrs.....\$68,000

2008 Deere 437C



S/N 169832, 90 Hrs.....\$160,000

2006 Deere 648GIII



S/N 605713, 8372 hrs.....\$75,000

2006 Deere 648GIII



S/N 606145, 7582 Hrs..... \$75,000

2005 Deere 437C



S/N 013036, 7766 hrs.....\$66,000

2009 Deere 643J



S/N 624115, 4181 hrs.....\$100,000

2002 Timberjack 460D



S/N 582906, 11,056 hrs.....\$38,000

2001 Timberjack 660D



DF/DD/30.5.....SALE PRICE \$50,000



JOHN DEERE

www.striblingequipment.com

1-800-682-6409

We buy used forestry equipment

New & Used Parts

Hwy. 59 N.
Lufkin, Texas

AROUND THE WORLD SALVAGE

TRUCK & TRACTOR & EQUIPMENT

Specializing In Skidder Salvage

YOUR SOURCE FOR

GEAR & HYDRAULIC, DIESEL ENGINES & DRIVE TRAIN COMPONENTS

Direct: 936-634-7210 ★ 1-800-IC-PARTS ★ Fax: 936-634-7240

www.aroundtheworldsalvage.com

ROCKWELL, EATON, FUNK, COMMERCIAL, BULLDOG, SPICER, DURST, GEAR PRODUCT

Alternate Parts & Components



We Have Engines, Transmissions & Axles in Stock

PARTS & SERVICE



New and Rebuilt



TRUCKS ● FORESTRY ● CONSTRUCTION

Email: apacgeneral@aol.com

YOUR SOURCE FOR

GEAR & HYDRAULIC, DIESEL ENGINES & DRIVE TRAIN COMPONENTS

TOLL FREE 1-800-251-2789

DIRECT 936-829-7278

FAX 936-829-7283

STRICKS EQUIPMENT CO., LLC

5700 Hwy 49E • Yazoo City, MS 39194
www.stricksequipment.com
662-746-8380



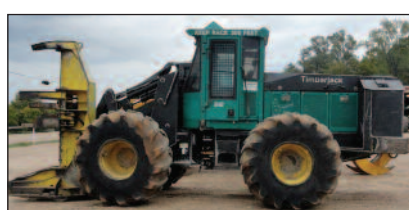
2006 John Deere 648GIII\$55,000



2007 Tigercat 630C\$70,000



2006 Hydro-Ax 470.....\$47,500



2002 Timberjack 840.....\$38,000



2005 Prentice 384, CSI delimeter\$45,000



2005 Tigercat 240B, CSI delimeter, super nice!.....\$55,000 video available

- 2005 Tigercat 620C, dual arch, tight machine\$45,000
- 2005 Tigercat 724D, 8557 hours, 5500 head, nice cutter\$65,000
- 2006 John Deere 748GIII dual arch, 35.5x32 tires, ready to work\$55,000
- 2006 John Deere 643J, FD 45 head, 28Lx26 tires, ready for the woods!\$65,000
- 2005 John Deere 648GIII\$52,000
- 2002 Cat 525B\$35,000
- Timberjack 380C\$17,000

- 1999 Cat 525\$17,000
- Bell Saw, lever control\$13,500
- Prentice 210D\$8,500
- CSI Reversible ground saw\$7,500
- FD 22 head, JD 843 or TJ 840\$10,000
- Miscellaneous Cat 518 and 525 parts
- 01 John Deere 544H, forks\$38,000
- 97 Cat 914G\$28,000
- Several John Deere 444E, 444H loaders available
- Komatsu W300

Forestry Parts Resource

**IT'S A NEW YEAR....
 TIME FOR SOME USED PARTS!**

- ** CAT 5-SERIES 278-2235 Grapple Tong Cylinder (16.6 sq-ft)\$2,500
- ** JOHN DEERE 648GIII: AT301858 12V Monitor\$500
- ** TIGERCAT 7 Series: AG008 Fan Drive Control Module\$300
- ** TIGERCAT 6-Series: BN250 RH Window (Cab Entry)\$400
- ** PRENTICE 742: 100156 Slewing Brg/Ring Gear\$1,000

CONTACT:
478.550.2330 - Keith
478.256.4063 - Gary
478.550.2375 - RJ
FORESTRYPARTSRESOURCE.COM

EQUIPMENT FINANCING

- Preferred Good Credit Plans
- Rough Credit Plans (turned down, tax liens, bankruptcies)
- Purchases • Refinance
- Start-up Business

• Loans Against Your Existing Equipment for QUICK CASH!

2-Hour Approvals!
 Low Monthly Payments
 Little or No Down Payments

15 Years In Business

CALL NOW
985-875-7373
 Fax: 985-867-1188

Email: coastalcapital@bellsouth.net

Personal Service
Ask For L.T.
 DEALERS WELCOME

FOR SALE



2007 John Deere Skidder 648 GIII \$65,000
 43x66 Tires, A/C, heat, new transmission, 8900 hours

Call Jody at 478-214-4132

HOSE, FITTINGS & CRIMPERS

SERVING THE LOGGING INDUSTRY FOR 20 YEARS. WE CAN SAVE YOU MONEY.

Tim Alligood
 Days or Nights: 1-252-341-9891
 email: tim.cavalierhose@yahoo.com

Visit us online: www.southernlogintimes.com

Thompson CAT

Richard Lindley • Used Equipment Manager • 205-849-4222
 Ashley Tucker • Northern Region • 205-849-4393
 Bill Baker • Used Equipment Manager – South • 334-215-5207

USED EQUIPMENT FOR SALE



337 Chipper T12410550
\$242,500
 811 hours, Equipped with a Cat C15 HP engine, 24"x48" throat, opening, 37.5x48" wide drum, (8) 12" long x 6" wide x 5/8" thick single edge Babbitt knives, (4) 11R24.5 tires

2280 T08635941
\$110,000
 3652 hours, Equipped with ROPS cab and A/C, front screen, 360 grapple, CTR 426 delimeter, mounted on Evans trailer, tires approximately 50%



VISIT OUR WEBSITE OR CALL US FOR MORE INFORMATION ON MORE OF OUR QUALITY USED EQUIPMENT

website: www.thompsontractor.com
 email: usedequipment@thompsontractor.com



DODSON EQUIPMENT Co.

P.O. Box 248 • Dodson, LA 71422 / New & Used Equipment Sales
 OFFICE PHONE: (318)628-3924 FAX: (318)628-7854 NIGHT PHONE (318)628-2909 (RICHARD)

EQUIPMENT FOR SALE

LOADERS:

- 2003 Husky 245 Joystick\$25,000
- 2006 Prentice 384 on trailer with delimeter\$70,000
- 2005 Timberjack 430BII on trailer with delimeter\$48,000
- 1994 Husky 335 Trailer mounted with delimeter\$22,000

SKIDDERS:

- 2004 648GIII 30.5 Tires\$42,000
- 2004 648GIII 43" Tires\$37,500
- 2006 Prentice 490, 30.5 Tires\$47,500
- 2005 CAT 525B Single Arch, 30.5 Tires\$45,000
- 2005 CAT 525B Dual Arch, 30.5 Tires\$50,000
- 2002 Franklin Q80C, 34" Tires\$32,500

SHEARS:

- (2) 2004 Timberking 340's, 28L tires, bunching heads\$42,000 each
- 2000 Hydro-Ax 570 FD22 head, 34" tires\$35,000
- 2004 Hydro-Ax 570 28L tires, Quadco bunching head\$37,500
- 2004 Timberking 350 bunching head, 34" 28L tires\$37,500
- Hydro-Ax 511E, 20" Koehring head, 34" tiresAS IS \$13,000

New Salvage Equipment Arriving Daily

Parting out all brands of forestry equipment

Please visit our updated web site: www.dodsonequipmentco.com



EASTERN Equipment

Brokerage, Inc.
252-946-9264



2003 Timberjack 840 Buncher, FD22 Saw, 28.1x26\$55,000

- '09 Deere 240 track w/ Denharco stroke delimeter, 2200 hrs.\$Call
- '08 Dynamic 585 Cone Head\$100,000
- '06 Trelan 23L w/loader, 2000 hrs.\$Call
- '05 Peterson 2400B horizontal grinder\$165,000
- '06 Prentice 2470 buncher w/saw\$60,000
- '01 Prentice 410EX log loader, CTR 42 Slasher\$36,500
- '00 Franklin Q90 D/A grapple\$25,000
- '95 Manitowoc 1642 debarker\$23,500
- '95 Rottne Forwarder w/loader\$20,000

CALL CHARLES or visit website for full specs and details
www.eebinc.com

Hatton-Brown's Custom Reprints

You've worked hard to excel in your business and we've noticed. Your feature story in a Hatton-Brown publication is a ready-made marketing tool waiting to work for you.

Spread the word about your success and enhance your company's image by providing customers with information built around this exposure.

We've put you in the spotlight so make the most of it!

For more information on ordering custom reprints contact:

Patti Campbell
334-834-1170

QUITTING BUSINESS

- '06 Timberking TK560 Hydra Gate Delimeter
- '09 525C CAT D/A Skidder 3900 hrs. Still has warranty
- '11 F450 Crew Cab 4X4 w/11' Knapheide tool body bed. 28,000 miles
- '07 3500 Dodge 4X4 service truck w/11'ft flatbed
- 4 -25X34 tire on 14 hole Tigercat/John Deere Wheel 1 brand new
- 4 -50%+ 66X4300X26 tire on 16 hole Cat Wheel
- 1 -16 hole Cat Wheel for a 66X4300X25 tire
- '07 CAT D5NXL Dozer w/cab/air & winch
- '95 International Dump Truck w/16 yard new bed

All equipment in great shape
Call Todd Bullock anytime
318-548-2808

RECONDITIONED DELIMBINATORS!!

In addition to new machines, CHAMBERS DELIMBINATOR, INC. now has factory reconditioned



DeLimbinators. These units have been inspected, repaired, and updated as needed. Call us and we will help you select a DeLiminator for your need.

WE ALSO BUY USED DELIMBINATORS

Call: 662-285-2777 day, 662-285-6832 eves
Email: info@chambersdeliminator.com

Equipment & Parts, Inc.

FINANCING AVAILABLE

www.equipmentandparts.com

Office : 903-238-8700 • Shane Fuller : 903-235-1147

Bill Bruner : 903 -235-2805

568

SKIDDERS



2006 John Deere 848G - Good 30.5 x 32 tires, dual arch grapple, J.D winch, Cab with air. Ready to work!\$79,500



2006 Timberjack 460D Grapple Skidder - Dual arch, Winch, Cab with air, 43" Flotation tires... \$79,500



2003 Timberjack 460D Grapple Skidder - Dual arch, Winch, Cab with air, 30.5 x 32 tires.....\$59,500

FELLER BUNCHERS/ MULCHERS



2007 Cat 573 Feller Buncher - 225 HP, Waratah FD22 Saw Head, very good 30. x 32 tires, cab with air\$CALLS



2006 Hydro - Ax 570 - 6,700 hours, 20" Hi Capacity Saw Head, "NEW" 28L tires, Cab with air.....\$79,500



2007 Gyro Trac GT13 Mulcher - CIMAF Mulching Head, Cummins Power, Enclosed cab with air, Low hour unit, Excellent Condition! Serviced and Ready.....\$79,500



2005 Timberking TK360 Mulcher - Fecon 9021 Mulching Head, 28L tires, Cab with air, Cat engine\$169,500



2007 Prentice 2470 Mulcher - 3,700 hours, FAE 200 Mulching Head, Cummins engine, 28L tires, Cab with air\$CALLS



2002 Hydro - Ax 570 Mulcher - Rotary Ax Mulching Head, Cummins engine, 34:00 tires, Cab with air\$97,500

NOT PICTURED

2004 Timberking TK560 / Prentice 384 Log Loader - CTR 450 Delimeter, Trailer, 6,200 hours\$59,500



Visa and Mastercard accepted



Buchanan Renewables, a West Africa biomass company, is seeking to contract professional operator trainers for our expanding logging/chipping operation in Liberia.

Buchanan Renewable Fuels Inc. is in the business of harvesting aged rubber trees and reducing them to chips for the worldwide biomass market. Our process covers harvesting, clearing, stump removal, transportation, chipping and ship loading. Of particular need is operator training on rubber tired feller bunchers, grapple skidders, track live heel log loaders and whole tree chippers. Our success depends on providing proper operator training for our local workforce. Not only to learn how to proficiently operate the harvesting equipment, but also to provide proper daily maintenance and care.

We are interested in hiring trainers committed to this development process. The contracts are flexible depending on a number of factors.

Interested trainers are invited to send their particulars to:
paul.leas@buchananrenewables.com

Please visit
www.buchananrenewables.com for more information about us.

562

3577

4306

1123

WANTED TO BUY

Cat 518 & Cat 518C skidders
in TX, LA area
Call Kent 936-699-4700
r_kentjones@yahoo.com 280

FOR SALE

- 2004 Tigercat 240B, 9877.5 hrs\$55,000
 - 2009 John Deere skidder 648H, 4350 hrs.\$110,000
- Please call Gilbert Thompson
(678) 654-3247 3625

FOR SALE

- 04 Tiger Cat 720D, very good condition, 5000 sawhead \$50,000 obo
 - 04 Prentice 384, 6 BT Cummins, CSI 264 delimeter/top saw, very good condition \$47,500
- 804-241-4821** 9263

THANK YOU.

We want to say Thank You to all of our advertisers. You had a choice and you chose Southern Loggin' Times.
your equipment, your company, your choice.

ARMY 6X6 TRUCKS 6209

2 1/2 Ton ★ 5 Ton ★ 10 Ton



Pull Out Trucks
Loader Chassis
Complete Military Truck Parts Inventory

ALL WHEEL DRIVE

MEMPHIS EQUIPMENT

766 S. Third • Memphis, TN 38106
901-774-0600 • Fax: 901-946-1919

www.memphisequipment.com • email: info@memphisequipment.com
THE NATION'S LARGEST ARMY TRUCK DEALER

WANTED DEAD OR ALIVE



**1960-2005 MACK TRUCKS
PAYING TOP \$DOLLARS**

ALSO OFFERING \$200 REWARD FOR INFORMATION
LEADING TO THE PURCHASE OF A TRUCK 3664

CALL SPARR TRUCK PARTS • **866-448-6322**



Quality Equipment & Parts, Inc.

"Trick Your Tractor"



Oil Drain Valves



Distributor for CENTRI Pre-Cleaners!



Prolenc Snubbers



New Joystick & Mechanical Seats



Three Rechargeable Log Light Kits available!



OEM & AfterMarket Overhaul Kits



877-664-6337

"We Are Loggers Too!"

Barko & Cummins Dealer

www.qamparts.com

IRONMART 7951

Your Recycling & Forestry Used Equipment Source



**2006 Cat 559
Riley 4800C delimeter
\$105,000**



**2008 Cat 563
22HC saw
\$135,000**

We also BUY Used Recycling & Forestry Equipment

Skidders

(5) 06-11 Cat 525C	\$75-195,000
(2) 06-08 Cat 545C	\$125-165,000
04/06 Cat 535B&C	\$82-119,500
(2) 06 Cat 535C	\$119,000
(3) 02-06 Cat 525B	\$39,900-90,500
07 Tigercat 620C, new eng	\$83,000

Knuckleboom Loaders

06-10 Cat 559 & 559B	\$105-160,000
01 Cat 322BL	\$109,000
03 Cat 325CFM	\$75,000
08 Prentice 2384TMS	\$40,000
04 Prentice 410E	\$59,000
(2) 04/05 Prentice 280TMS	\$39,000
04 Prentice 410E CTR 450	\$59,000

Feller Bunchers

10 Cat 553	\$165,000
(2) 08/11 Cat 563, 22HC, 195 hrs	\$130,000
04 HX 470	\$40,000
06 HX 670	\$95,000
(2) 08 Prentice 2470	\$125-130,000
04 Tigercat 726D	\$105,000
(2) 04 Timberking 350, 22HC	\$70,000
04 Timberking 721B, 36" TG	\$115,000

Grinders-Chippers Debarkers

07/09 DO 3060K/3080K	\$350-590,000
07/09 Doppstadt SM720	\$180-220,000
07 Doppstadt AK230	\$225,000
03 Duratech 4012	\$170,000
08 Metso ST620	\$325,000
03 Morbark 3600	\$155,000
98 Morbark 1300	\$115,000
96 Morbark 2755	\$349,000
08 Peterson 5710C warr	\$540,000
06 Peterson 6700	\$399,000
(2) 06 Peterson 4710	\$440,000
04/05 Peterson 4800	\$99-199,000
(3) 04/05 Peterson 4700B	\$200-350,000
(2) 00/02 Peterson 5000G	\$125-275,000
07 Vermeer TG7000	\$280,000
08 Woodsman 337	\$235,000

Mowers/Mulchers

07 Fecon FTX140FM	\$124,900
-------------------	-----------

Misc.

CSI DT2800	\$25,000
10 CSI Slasher Flat V bunk	\$12,000
69 Rogers 40 ton lowboy-rebuilt	\$24,000
02 White 35 ton	\$20,000

888.561.1115

View our entire
inventory online at

IronMart.com



USED LOGGING EQUIPMENT

Puckett



LOADERS:

160 Barko 98 22274, Ready to work on trailer,	\$22,000
384 Prentice 05 PR61306, Trailer Mounted, clean, 10,820 hrs.....	\$49,000
2384 Prentice 08 PR63412, CTR 426, Kodiak trailer, 5,400 hrs.....	\$100,000
430-B Timber Jack 04 X012170, Hudson Delimber.....	\$27,000

SKIDDERS:

525B CAT 03 03KZ00914, 8,556 hours, single arch, cold A/C.....	\$57,000
525C CAT 10 052500801, 4,300 hrs, SA, 30.5 tires.....	\$136,000
525C CAT 09 052500712, SA, 30.5 tires, 5,500 hrs.....	\$126,500
2432 Prentice 07 PS15396, DA, 43:00 Tires, SA, very nice.....	\$66,500
648G Deere 06 601846, SA, 43:00 tires, 9,000 hrs.....	\$63,000

CUTTERS:

411-EXP Hydro-Ax 03 8230, 18" thinning saw, 28L tires, 9,295 hrs...	\$35,000
470 Hydro-Ax 04 HA18615, 28L tires, 20" Hi-Cap thinning saw, 5,520 hrs.	\$42,000
570 Hydro-Ax 01 7868, 6,026 hrs,	\$48,000
2670 Prentice 07 PB19312, 22" side cut saw, 34:00 tires, excellent..	\$89,000
840 Timber Jack 02 X002043, New teeth, Good rubber, 7,139 hrs....	\$59,000
TK340 Timberking 05 HA19066, 20" hi-cap saw, 8300 hours, 28L....	\$45,000

DOZERS:

650J Deere 09 X172307, 2,100 hrs	\$97,000
D5G CAT 05 RKG01366, 2,889 hrs.....	\$52,000
D6R CAT 06 WRG00266, 5,965 hrs.....	\$181,000

WHEEL LOADERS:

966H LL CAT 09 0A6D02241, 7,958 hrs.....	\$260,000
--	-----------

MISC:

CTR Model 42-IP Slasher.....	\$8,000
------------------------------	---------

Call Us Today!



Pat Doyle
Used Forestry Sales Manager
(601) 684-9962 Direct
(601) 810-3363 Cell

Chris May
Used Equipment Sales Specialist
(601) 985-3700 Direct
(601) 572-0044 Cell

800-748-3095

See our complete inventory online:
www.dmequipment.com www.puckettcat.com

YOU HAVE TIRES. WE HAVE CHAINS. American Chains



1845

American Chains offers a full selection of Skidder Tire Chains, exclusively through TCR. American Chains are Made in the USA, have great prices, and Free Shipping.

Logon today for a full line of Truck, Car, ATV, Lawn & Garden, Tractor, and Heavy Equipment chains.



207 465 7276 | www.tirechainsrequired.com

VISIT US ONLINE:
www.southernloggintimes.com

FOR SALE



Tigercat 726B straight dry machine, 75% tires, heat, a/c, 6715 hrs....\$70,000

Call: 704-867-3129

1211

IF YOU NEED

To buy or sell forestry, construction, utility or truck equipment, or if you just need an appraisal, contact me, Johnny Pynes with JM Wood Auction. Over 25 years experience.

Day 334-312-4136

Night 334-271-1475

or Email: johnwpynes@knology.net

770

REMAN John Deere & Timberjack OILGEAR Specialist's

LOGGERS HYDRAULICS
Hydraulics since 1974



- SAVE BIG \$\$\$ Over Dealer Pricing!
- Over 30 Years Experience with Oilgear
- New or Reman Parts & We Can Re-work Your End Caps & Swash Blocks - Perfect for Repair Shops
- 18 month Warranty on REMAN Pumps



John Deere: AT172899 • AT172900 • AT195248 • AT353936 • AT140333 • AT133464 • AT180656
Timberjack 460's: F121014 • 811822600 • 30013133 • PVVH34RDFSCNSN826B

We Buy Cores! - Call for details - We Need Cores!

- SALES, SERVICE, & REPAIR ON ALL TYPES OF LOGGING HYDRAULICS -

Specializing in: SAUER-DANFOSS • SUNDSTRAND • REXROTH • EATON CHAR-LYN • VICKERS • KAWASAKI
COMMERCIAL • LINDE • CAT • PARKER • KOMATSU • FAIRFIELD • POCLAIN • PARKER COMMERCIAL 3-STAGE GEAR PUMPS & more!

"Helping Loggers Get More Hydraulic Help For Less Money!"

3723

800-785-5133

www.loggershydraulics.com

904-688-2247

Call Today!

Email: sales@loggershydraulics.com

Jacksonville, FL



FOR MORE QUALITY EQUIPMENT LIKE THESE:



2005 Tigercat 620C, S/N 6200710, 10,120 hours, Dual arch, Tires 30.5x32, Rears 80%, Right front 60%, Left front 30%\$79,500



2006 Kenworth W900B, Cummins eng., 998,486 mi; 13 spd, engine brake, 3.55 ratio, 11R22.5 tires, aluminum wheels, 262 in wheel-base, tandem axle, 12,000 lb.front axle weight, 40,000 lb rear axle weight.....\$39,500



2009 Tigercat 610C, S/N 6100381, 4,026 hours, Dual Arch, 60% 30.5x32 tires...\$119,500



2004 Ford F550, VIN #1FDAW56 P24EB96449, 121,002 mi, Powerstroke diesel engine, automatic trans, 4x2 drive, 90% Michelin tires, brake control\$19,900

Visit our website www.oakleyequipment.com

Call Ted at 256-766-6491 • Cell 256-810-3190

or DeWayne at 256-710-2111

We are in the New and Used Business—Riley Delimbers & Slashers, Primex Tires, Stihl, Prolenc, Gator Saw Teeth, McClendon Trailers

WE WILL MATCH OR BEAT ALL PRICES ON PRIMEX TIRES!



TIDEWATER EQUIPMENT CO.

MAC McLAURIN • 910-610-7029

Call or visit our website: www.tidewaterequip.com

SKIDDERS

(5) CTR 950 D/A and S/A	25,000-\$70,000
2004 CAT 525B	\$46,000
2005 CAT 525B	\$79,200
2007 CAT 525C	\$70,000
2009 CAT 525C	\$131,000
2003 Deere 648GIII D/A	\$45,500
2004 Deere 648GIII D/A SWEDA	\$73,000
2008 Deere 648H D/A	\$100,000
2003 Deere 848G	\$33,900
2004 Tigercat 620 D/A	\$72,500
2005 Tigercat 620C S/A SWEDA	\$95,000
2005 Tigercat 620C D/A	\$85,000
2006 Tigercat 620C S/A	\$93,500
2001 Tigercat 630B D/A	\$40,000
2004 Tigercat 630C S/A	\$75,000
2005 Tigercat 630C D/A SWEDA	\$60,000
2006 Tigercat 630C D/A	\$85,000
2003 Timberjack 460D	\$45,000
2004 Timberjack 460D	\$58,500
2005 Timberjack 460D	\$57,000

FELLERBUNCHERS

1995 Deere 643 Saw	\$22,500
2005 Deere 643H	\$75,000
2002 Hydro-Ax 411 Ex/20 Saw	\$38,000
2005 Hydro-Ax 670	\$62,000
2009 Prentice 2470	\$112,500
2005 Tigercat 718/5500	\$94,000
2005 Tigercat 720D/5600 Saw	\$82,000
2005 Tigercat 726D/4702 saw	\$82,500
2004 Tigercat 822	\$144,900
2002 Timberjack 608S	\$63,750
2004 Timberking 340	\$40,000

LOG LOADERS

1998 Barko 160D/CTR 400	\$21,000
2006 Deere 437C/Rotobec	\$82,500
2007 Prentice 2280	\$79,500
1999 Tigercat 230B/CTR 400	\$10,000
2005 Tigercat 230B/143 CSI	\$68,500
2003 Tigercat 230B/CTR	\$45,000
2007 Tigercat 234	\$100,000
2008 Tigercat 234	\$125,000
2005 Tigercat 240B	\$52,500

2005 Tigercat 244	\$56,900
2005 Timberking/CTR 450	\$35,000

INDUSTRIAL EQUIPMENT

2009 Conehead 570	\$65,000
2002 Morbark 30NCL Chipper	\$187,500
2009 Morbark 30/36	\$162,500
2006 Morbark 6600 1050HP	\$271,900

MISCELLANEOUS

Assortment of tires and rims for Deere/ Tigercat	
CTR 314 and 400 Delimbers	
.....	\$1,000 to \$18,000
New/Used Magnum and FECON	
Mulcher heads	
(3) K Saws	\$5,000 to \$10,000
Tigercat Shears and Saws ...	\$2,500 to \$20,000

LIQUIDATION SALE

New Chippers
New Mulching Machines
Starting under \$2899/month

View our web site for over 200 listings with newly reduced prices and pictures



"Where the forestry customer comes first."

www.forestryfirst.com

Brian Nielson (Cell) 803.960.1613 | Jesse Sewell (Cell) 803.807.1726



07 Tigercat 234 - \$79,500



07 Tigercat 620C - \$89,500



06 Tigercat 720D - Call

- | | |
|--|-----------|
| 2009 CAT 525C DA Skidder wWinch, Grapple, 3900 hrs, Very Nice | \$142,500 |
| 2008 CAT 545C DA Skidder with Grapple, Winch, 35.5 Tires, 7400 hrs | \$119,500 |
| 2007 Tigercat 620C Single Arch Skidder, Grapple, Winch, 30.5 Tires, 7500 hrs | Call |
| 2007 CAT 535C Dual Arch Skidder, Grapple, Winch, 30.5 Tires, 5100 hrs | \$129,500 |
| 2007 CAT 545C DA Skidder, Grapple, Winch, 30.5 tires, 5900 hrs | Call |
| 2006 CAT 545 DA Skidder, Grapple, Winch, 35.5 Tires, 5200 hrs | \$125,000 |
| 1999 CAT 517 Track Cable Skidder, OROPS, New Undercarriage, 3700 hrs | \$114,900 |
| 1999 CAT 515 Grapple Skidder with Winch, OROPS, 28L Tires, 7200 Hrs | \$37,500 |
| 1996 CAT 515 Cable Skidder, 23.1 Tires, 7100 Hours, Excellent Condition! | \$44,900 |
| 1996 Timberjack 460 Skidder, 30.5, Winch, 110 Esco, Unkn Hrs | \$24,900 |



08 Peterson 5900 w4500 hrs



06 Woodsmen 334 - Call



Peterson 5000G & H Chippers

- | | |
|---|-----------|
| (2) 07 & 08 Tigercat 718/E Fellerbunchers, 20" HiCap Saw, 30.5 Tires, low hrs | Call |
| 2006 Tigercat 720D Fellerbuncher, 5500 Sawhead, 30.5 Tires, 6300 Hrs | Call |
| 2006 Tigercat 720D Fellerbuncher, 5500 Sawhead, 30.5 Tires, 9300 Hrs | Call |
| 2006 CAT 553 Fellerbuncher, 20" HiCap Saw, 28L Tires, 4900 hrs | \$92,500 |
| 2003 Timberking 370 Fellerbuncher w24" Saw, 28L Tires, 6000 hrs | \$52,000 |
| 2002 Timboo 445 Track Fellerbuncher, 22" Quadroo 360 Saw, 24" SG Pads | \$159,900 |
| 2000 Hydro-Ax 411EX with FECON BH120, 28L Tires | \$79,500 |
| 1999 Timberjack 850, 8.3L Cummins (fresh), 36" TGP Pads, | \$82,500 |
| 1993 Timboo 425B, 6BTA Cummins (fresh) 32 TGP, 30" Barsaw | \$27,900 |



02 TI 445D w22" Saw, Nice!



2008 CAT 545 - \$119,500



Sneller 170 w300 hrs - \$65,000

- | | |
|--|-----------|
| 2007 Tigercat 234 Knuckleboom Loader, CTR 426, 53" Grapple, 9700 hrs | \$79,500 |
| 2005 Tigercat 240B Knuckleboom Loader, CSI Delimber, 53" Grapple | \$39,500 |
| 2005 Timberking 575DK TMS Loader, CTR 450, 55" Grapple, 3400 hrs | \$85,000 |
| 2008 Peterson 5900 Chipper, 3 Knife, Key System, 4400 Hrs, One Owner | \$289,500 |
| 2006 Woodsmen 334 Chipper, New Drum Update, 974Hrs | \$126,500 |
| 2006 Treilan 23L Chipper, CAT 3412, 3-Knife, 1200 hrs | \$285,000 |
| 1998 Peterson 5000G, 990 hp, 3-Flail, 3-Knife, Excellent Condition | Call |
| 1997 Peterson 5000G, 850 hp, 2-Flail, 3-Knife, Good Condition | \$92,500 |
| 2008 Sneller 170 Mulching Head with 300 Hrs, Like New, Fits CAT 320 | \$65,000 |
| 2002 CAT 525B/535B Bunching Grapple (ESCO 123") | \$5,900 |
| Tigercat 5701 Sawhead, New Disc, Bearing & Shaft | \$12,400 |
| CTR V-Bunk and Flat Bunk, Extended and Reversible Ground Saws | Call |

To see our full inventory, including Pictures, Videos, Specs, Inspections, call or visit us online at www.forestryfirst.com.