

# IRONWORKS

## TOLL FREE: 1-800-669-5613

IRONWORKS RATES; Space available by column inch only, one inch minimum. Rate is \$50 per inch, special typesetting, borders, photo inclusion, blind ads, \$10 extra each. Deadlines: By mail, 15th of month prior to publication. Place your ad toll-free 24 hours a day from anywhere in the USA (except Alaska and Hawaii) 1-800-669-5613 ask for Classifieds 8:30-5 pm CST. After business hours our automatic ad taker will take your ads.

### Feller Buncher Users:

Operation of a bent sawdisk will wear the top surfaces unevenly and the disk will quickly get out of balance due to uneven metal loss.

This can cause a disk to measure unevenly on the top surfaces even after straightening. We Straighten and balance ANY sawdisk! Including crack repairs.

**CARVER SAWBLADE REPAIR**  
WASHINGTON NC  
252-945-2358

### RECONDITIONED DELIMBINATORS!!

In addition to new machines, CHAMBERS DELIMBINATOR, INC. now has factory reconditioned



DeLimbinators. These units have been inspected, repaired, and updated as needed. Call us and we will help you select a DeLimbinator for your need.

WE ALSO BUY USED DELIMBINATORS

Call: 662-285-2777 day, 662-285-6832 eves  
Email: info@chambersdelimbinator.com

### WANTED TO BUY

Cat 518 & Cat 518C skidders  
in TX, LA area  
Call Kent 936-699-4700  
r\_kentjones@yahoo.com

**YOU COULD BE READING YOUR AD HERE!**  
Contact Bridget DeVane  
800-669-5613  
for more information

### NEW & REMAN HYDRAULIC PUMPS, MOTORS, & PARTS

"Helping You Get More Hydraulic Help For Less Money!"

One phone call could save you \$1000's of dollars in these tough economic times!



- SAVE \$\$\$ - Consistently BEAT Dealer & Major Supplier Pricing!
- Full One (1) Year Warranty
- 100% Tested to OEM Spec's!
- Large Inventory Resources Available for Immediate Shipment!
- Competitive Interchange Experts!
- John Deere/Oilgear Reman Exchange Pump Specialists!
- Rebuild Control Valves Back to New - All Makes
- We Buy Used Cores!
- Service Parts & Repair on All Makes
- Discount Replacement Cylinder Seal Kits

### LOGGING • CONSTRUCTION • INDUSTRIAL

- Tigercat
- Prentice
- Franklin
- Timberking
- Hydro-Ax
- John Deere
- CAT
- Timbco
- Barko
- Timberjack
- Kawasaki
- Komatsu
- Hitachi
- Liebherr
- and more!

- LINDE
- SUNDSTRAND
- REXROTH
- SAUER DANFOSS
- VICKERS
- EATON
- KAWASAKI
- OILGEAR
- FAIRFIELD

- POCLAIN
- STAFFA
- UCHIDA
- DYNAPOWER
- DENISON
- COMMERCIAL
- PARKER
- ALL MAKES & MODELS!!

\*\*Eaton/Vickers & Linde authorized service center affiliation.

Hydraulic & Pneumatic Services and Loggers Hydraulics Division

800-785-5133 | LOGGERS HYDRAULICS | 904-688-2247

## EUREKA! EUREKA! EUREKA!

OWNERS HAVE OVER 30 YEARS COMBINED EXPERIENCE!

We can save you money on Saw Teeth. Hundreds of satisfied customers. Rebuilt Exchange or New. We specialize in rebuilding Koehring 2000, Hurricana, Hydro Ax split teeth and all other brands. Call Jimmy or Niel Mitchell. Quantity Discounts!



**EUREKA SAW TOOTH CO., INC.**

4275 Moores Ferry Rd. • Skippers, Virginia 23879  
PH./FAX (day) 1-434-634-9836 or Night/Weekends • 1-434-634-9185



Richard Lindley • Used Equipment Manager • 205-849-4222  
Ashley Tucker • Northern Region • 205-849-4393  
Bill Baker • Used Equipment Manager – South • 334-215-5207

### USED EQUIPMENT FOR SALE



**337 Chipper T12410550**  
.....\$242,500  
811 hours, Equipped with a Cat C15 HP engine, 24"x48" throat, opening, 37.5x48" wide drum, (8) 12" long x 6" wide x 5/8" thick single edge Babbitt knives, (4) 11R24.5 tires

**225 T01231752**

.....\$CALL  
9448 hours, Equipped with ROPS cab and A/C, front screen, 360 Rotobec grapple, CTR 450 delimeter, mounted on a Pitts trailer, 11-22.5 tire apr. 50%



VISIT OUR WEBSITE OR CALL US FOR MORE INFORMATION  
ON MORE OF OUR QUALITY USED EQUIPMENT

website: [www.thompsontractor.com](http://www.thompsontractor.com)  
email: [usedequipment@thompsontractor.com](mailto:usedequipment@thompsontractor.com)



### FOR MORE QUALITY EQUIPMENT LIKE THESE:



**2005 Tigercat 620C**, S/N 6200710, 10,120 hours, Dual arch, Tires 30.5x32, Rears 80%, Right front 60%, Left front 30% .....\$79,500



**2006 Kenworth W900B**, Cummins eng., 998,486 mi; 13 spd, engine brake, 3.55 ratio, 11R22.5 tires, aluminum wheels, 262 in wheelbase, tandem axle, 12,000 lb.front axle weight, 40,000 lb rear axle weight.....\$39,500



**2009 Tigercat 610C**, S/N 6100381, 4,026 hours, Dual Arch, 60% 30.5x32 tires...\$119,500



**2000 Ford F650**, with Maintainer body, 6 spd, air brakes, 11R22.5 tires, aluminum wheels, 154,653 miles, VIN #3FDWF65H1YMA30994 .....\$59,500

Visit our website [www.oakleyequipment.com](http://www.oakleyequipment.com)

Call Ted at 256-766-6491 • Cell 256-810-3190 • or DeWayne at 256-710-2111

We are in the New and Used Business—Riley Delimiters & Slashers, Primex Tires, Stihl, Prolenc, Gator Saw Teeth, McClendon Trailers

We Sell Nationwide • Our Pricing is FOB the Buyers Location in the Continental US

**WE WILL MATCH OR BEAT ALL PRICES ON PRIMEX TIRES!**

## EQUIPMENT SALES

Sales Representative to demonstrate and sell Bandit whole tree chippers, horizontal grinders & forestry mowers in Georgia.

Strong earnings potential based on results. Salary + commission; incentives; company vehicle; paid expenses; paid health insurance; 401-K/profit sharing; short-term disability, etc.

Successful sales history, preferably in the forestry/logging or heavy construction equipment industry preferred.

Mail resume in confidence to HR, Bandit of the Southeast, 4600 Reagan Dr., Charlotte, NC 2820 or e-mail to resume@dwotc.com

Bandit of the Southeast

1-877-875-9616 Bandit of the Southeast



1391

## FOR SALE



06 Tigercat 724D 5702 Sawhead, tires-34, 6227 hrs.....\$83,000

- 05 Hydro Ax 670, 7520 hours Very clean machine .....\$68,000
- 05 Deere loader 435C, 5405 hrs, 264 CSI delimeter, CTR Ground saw .....\$60,000
- 02 Mack 427 hp, 38k rears, air ride, 484K miles .....\$27,000
- 03 Mack 380 hp, 46k rears, air ride, 703K miles .....\$22,000
- 6 ea 40' log trailers .....Call for Price

256-689-0662 or 256-835-0033 office

3462

## FOR SALE



2007 TIGERCAT HARVESTER, 250 WITH 2011 LOG MAX 7000XT \$244,000

2010 HYDRO AX 2670 WITH H-56 SAWHEAD 1500 HOURS.....\$145,000

2008 TIGERCAT 250B TRACK LOADER 7500 HOURS.....\$115,000

3-PETERBILT 379 TRUCKS, 2006-2007 DAYCABS AIRTRAC

870-356-9450 or 870-356-2722

3888

## Equipment & Parts, Inc.

FINANCING AVAILABLE

www.equipmentandparts.com

Office : 903-238-8700 • Shane Fuller : 903-235-1147

Bill Bruner : 903 -235-2805

5569

### SKIDDERS



2006 John Deere 848G - Good 30.5 x 32 tires, dual arch grapple, J.D winch, Cab with air. Ready to work!.....\$79,500



2006 Timberjack 460D Grapple Skidder - Dual arch, Winch, Cab with air, 43" Flotation tires... \$79,500



2003 Timberjack 460D Grapple Skidder - Dual arch, Winch, Cab with air, 30.5 x 32 tires.....\$59,500



2005 Timberking TK360 Mulcher - Fecon 9021 Mulching Head, 28L tires, Cab with air, Cat engine .....\$169,500



2007 Prentice 2470 Mulcher - 3,700 hours on machine, FAE 200 Mulching Head, Cummins engine, 28L tires, Cab with air .....\$CALL\$



2006 Hydro-Ax 470 Mulcher - 6,500 hours, "NEW" Fecon 9021 Mulching head, "NEW" Recon Cummins engine, Cab with air, 28L tires .....\$CALL\$

### FELLER BUNCHERS/ MULCHERS



2006 Hydro-Ax 570 - 6,700 hours, 20" Hi Capacity Saw Head or 22 inch center post logging head, Good 28L tires, Cab with air .....\$79,500



2002 Hydro - Ax 570 Mulcher - Rotary Ax Mulching Head, Cummins engine, 34:00 tires, Cab with air .....\$97,500



### NOT PICTURED

2004 Timberking TK560 / Prentice 384 Log Loader - CTR 450 Delimeter, Trailer, 6,200 hours .....\$59,500

2007 Gyro Trac GT13 Mulcher - CIMAF Mulching Head, Cummins Power, Enclosed cab with air, Low hour unit, Excellent Condition! Serviced and Ready.....\$79,500



Visa and Mastercard accepted

## EQUIPMENT FINANCING

- Preferred Good Credit Plans
- Rough Credit Plans (turned down, tax liens, bankruptcies)
- Purchases • Refinance
- Start-up Business

Loans Against Your Existing Equipment for QUICK CASH!

2-Hour Approvals! Low Monthly Payments Little or No Down Payments

15 Years In Business

CALL NOW

985-875-7373

Fax: 985-867-1188

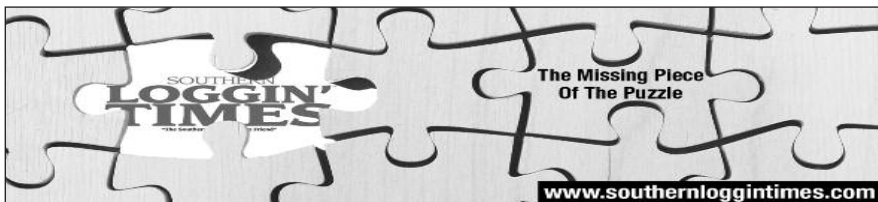
Email: coastalcapital@bellsouth.net

Personal Service

Ask For L.T.

DEALERS WELCOME

1447



The Missing Piece Of The Puzzle

www.southernloggintimes.com

## MEMPHIS EQUIPMENT Company

THE NATION'S LARGEST ARMY TRUCK DEALER

### PULL OUT TRUCK



5 TON 6X6 CUMMINS 250 RECONDITIONED \$16,500

30 DAY PARTS WARRANTY DELIVERY AVAILABLE

766 S. THIRD • MEMPHIS, TN 38106  
901-774-0600 • FAX: 901-946-1919  
www.memphisequipment.com  
email: info@memphisequipment.com



# USED LOGGING EQUIPMENT

**Puckett**



### LOADERS:

- 160 Barko 98 22274, Ready to work on trailer, .....\$22,000
- 280 Prentice 04, PR59606, CTR 450 del, Deere engine..... \$35,000
- 384 Prentice 05 PR61306, Trailer Mounted, clean, 10,820 hrs.....\$49,000
- 2384 Prentice 08 PR63412, CTR 426, Kodiak trailer, 5,400 hrs..... \$100,000
- 430-B Timber Jack 04 X012170, Hudson Delimber.....\$27,000
- 437-C J.Deere 09, X170720, CSI del, Kodiak, 4890 hrs..... \$83,000

### SKIDDERS:

- 525B CAT 03 03KZ00914, 8,556 hours, single arch, cold A/C..... \$57,000
- 525C CAT 10 052500801, 4,300 hrs, SA, 30.5 tires..... \$136,000
- 525C CAT 09 052500712, SA, 30.5 tires, 5,500 hrs.....\$126,500
- 648G Deere 06 601846, SA, 43:00 tires, 9,000 hrs.....\$63,000

### CUTTERS:

- 411-EXP Hydro-Ax 03 8230, 18" thinning saw, 28L tires, 9,295 hrs...\$35,000
- 470 Hydro-Ax 04 HA18615, 28L tires, 20" Hi-Cap thinning saw, 5,520 hrs. \$42,000
- 570 Hydro-Ax 01 7868, 6,026 hrs, .....\$48,000
- 2670 Prentice 07 PB19312, 22" side cut saw, 34:00 tires, excellent..\$89,000
- 840 Timber Jack 02 X002043, New teeth, Good rubber, 7,139 hrs....\$59,000
- TK340 Timberking 05 HA19066, 20" hi-cap saw, 8300 hours, 28L.... \$45,000

### DOZERS:

- 650J Deere 09 X172307, 2,100 hrs ..... \$97,000
- D5N LGP CAB CAT 05 AKD00457, 5,007 hrs..... \$68,500
- D6R CAT 06 WRG00266, 5,965 hrs..... \$181,000

### WHEEL LOADERS:

- 966H LL CAT 09 0A6D02241, 7,958 hrs..... \$260,000

### MISC:

- CTR Model 42-IP Slasher.....\$8,000



## Call Us Today!

**Pat Doyle**  
Used Forestry Sales Manager  
(601) 684-9962 Direct  
(601) 810-3363 Cell

**Chris May**  
Used Equipment Sales Specialist  
(601) 985-3700 Direct  
(601) 572-0044 Cell

# 800-748-3095

See our complete inventory online:  
[www.dmequipment.com](http://www.dmequipment.com) [www.puckettcat.com](http://www.puckettcat.com)

## EASTERN Equipment

Brokerage, Inc.  
**252-946-9264**



Eager Beaver 35 Ton Non-ground bearing debatable lowbed, 1999 model, gas engine .....\$28,500



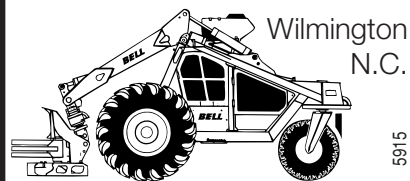
Hydro-Ax/Prentice 2470 w/6196 hrs., 2006 model, 28.1x26 tires, clean .....\$55,500



10 Ton 6x6 5th wheel tractor, Cummins V8-300HP, 5-speed, 1965 model .....\$13,500

**CALL CHARLES or visit website for full specs and details**  
[www.eebinc.com](http://www.eebinc.com)

## ZAMBESI EQUIPMENT INC.



"Your Reliable **BELL** Dealer"

For The Right Parts Everytime

Used Bells For Sale

Call Henry

**1-800-542-3309**

USED EQUIPMENT FOR SALE:

- Bell**
- Disc Saw ..... \$35,000
- Ultra T ..... \$25,000
- Super T, Tracks ..... \$25,000
- SlewBoom Tracks. .... \$70,000
- Dynamic** 515 w/Cummins 275 ..... \$65,000

Turn **TRASH** into **CASH** Chip With



**Buchanan Renewables, a West Africa biomass company, is seeking to contract professional operator trainers for our expanding logging/chipping operation in Liberia.**

Buchanan Renewable Fuels Inc. is in the business of harvesting aged rubber trees and reducing them to chips for the worldwide biomass market. Our process covers harvesting, clearing, stump removal, transportation, chipping and ship loading. Of particular need is operator training on rubber tired feller bunchers, grapple skidders, track live heel log loaders and whole tree chippers. Our success depends on providing proper operator training for our local workforce. Not only to learn how to proficiently operate the harvesting equipment, but also to provide proper daily maintenance and care.

We are interested in hiring trainers committed to this development process. The contracts are flexible depending on a number of factors.

**Interested trainers are invited to send their particulars to:**  
[paul.leas@buchananrenewables.com](mailto:paul.leas@buchananrenewables.com)

Please visit [www.buchananrenewables.com](http://www.buchananrenewables.com) for more information about us.

4306

## FOR SALE

- **2002 Timberjack 840**, FD22 head 67x34 tires .....\$57,000
  - **2007 JD 2054** 4775 hrs. 52" Hultdins grapple w/ CTR SCD delimber inc. buck-saw .....\$142,000 or .....\$135,000 w/o delimber
  - **2007 748H JD skidder** 6900 hrs. d/a,35.5x32 tires .....105,000
  - **2007 Peterbilt 335** crewcab svc.truck Feterl body,wireless crane,Vanair Tiger air comp.,only 52,000 mi.....\$110,000
  - **750C LT II JD dozer** 1825 hrs. enc.cab,6-way blade .....\$105,000
  - **5-Pitts 4-bolster log trailers**, 11R22.5 tires.....\$10,000 ea
- Call Nipper @ 478-214-7045**  
8754

visit us online:  
[www.southernlogintimes.com](http://www.southernlogintimes.com)

HOME OF **PLANETARY CITY** PARTS WORLD

Quality Master Distributors of Replacement Parts for Skidders, Backhoes, Knucklebooms, Crawlers & Other Off-Road Equipment.

**Forestry & Construction, Inc.**  
800-809-4848  
Ph: 540-586-6814 • Fax 540-586-6496  
[www.forestryconstruction.com](http://www.forestryconstruction.com)

2583

New & Used Parts

Hwy. 59 N.  
Lufkin, Texas

# AROUND THE WORLD SALVAGE

## TRUCK & TRACTOR EQUIPMENT

*Specializing In Skidder Salvage*

**YOUR SOURCE FOR**

GEAR & HYDRAULIC, DIESEL ENGINES & DRIVE TRAIN COMPONENTS

Direct: 936-634-7210 ★ 1-800-IC-PARTS ★ Fax: 936-634-7240  
www.aroundtheworldsalvage.com

ROCKWELL, EATON, FUNK, COMMERCIAL, BULLDOG, SPICER, DURST, GEAR PRODUCT

### Alternate Parts & Components



*We Have Engines, Transmissions & Axles in Stock*

### PARTS & SERVICE



### New and Rebuilt



### TRUCKS ● FORESTRY ● CONSTRUCTION

Email: apacgeneral@aol.com

**YOUR SOURCE FOR**

GEAR & HYDRAULIC, DIESEL ENGINES & DRIVE TRAIN COMPONENTS

**TOLL FREE** 1-800-251-2789

**DIRECT** 936-829-7278

**FAX** 936-829-7283

# WATERS

International Trucks

65 Hwy 19 North Meridian, MS 39304  
**1.800.844.1600**  
[www.waterstruck.com](http://www.waterstruck.com)

**USED EQUIPMENT:**  
 07 Barko 495 ML/CSI 264/Trl. \$75,000  
 Prentice 210C/ Trl. \$7,500  
 Demo Dynamic 585 12 hrs \$POR  
 06 Barko 495 ML/CSI/ TRL - \$62,500  
 02 Barko 225/CTR/TRL - \$30,000

 New 495ML & 595ML's in stock with CSI delimiters and slashers available

MS Dynamic Dealer for the Dynamic Conhead Chipper

**Sales:** David Sanders  
 601.917.7131 (cell)  
 1\*57\*997 (Southern line)  
 dsanders@waterstruck.com

Ronnie Sims 7393  
 601.479.4679 (cell)  
 1\*57\*789 (Southern line)  
 rsims@waterstruck.com

**Parts:** Ryan Shelton  
 1\*57\*480 (Southern line)  
 rshelton@waterstruck.com

**Top Quality Used Parts  
 Our Specialty Fair Prices  
 Customer Satisfaction**



Caterpillar	Tigercat
Franklin	Prentice
Clark	Barko
Timberjack	Husky
John Deere	Kobelco
Tree Farmer	Timberking
Hydro-Ax	

**In Business 40 Years**  
 P.O. Box 98 • Moncks Corner  
 SC 29461 • 843-761-8220  
 Fax: 843-899-2492

**Night Equip. Sales:**  
 Allen Ward — 843-509-0005  
 Johnny Ward — 843-860-1630

**Night Used Parts:**  
 Robert Mullinax — 843-569-3513  
 Toll Free: 800-845-6648  
[www.wvtractor.com](http://www.wvtractor.com)

  1926

## ATTN LOGGERS

Want to buy Stihl chain saws, broken, crunched or blown—models 044, 046, 066, MS 460 and other production saws.

Call Clyde  
 540-745-3382 evenings  
 or 540-392-4301 cell 4360

DO YOU WANT YOUR AD  
**TO POP?**

Any classified ad placed in SLT that is 1/4 page or larger has the potential of being in **COLOR!**

Contact Bridget DeVane for full details  
**800-669-5613**

**OREGON OREGON OREGON OREGON**

 [www.loggingparts.com](http://www.loggingparts.com)  
 Fax: 912-375-0733  
 Hazlehurst, GA 31539  
 Office: 912-375-5665  
**1-800-284-9032**  
**NEW AND USED LOGGING PARTS**

OEM & Aftermarket Parts For All Makes 7195

**OREGON OREGON OREGON OREGON**

# Quality Equipment & Parts, Inc.

## 877-664-6337

### For Sale



**Quick Drain Oil Pan Valve**





**Cold Fire Products Available**

1995 BARKO 275B on Self Propelled Carrier  
 1996 BARKO 160B on Self Propelled Carrier  
 1995 BARKO 160B on Trailer  
 2001 TIGERCAT 235B Log Loader with Trailer  
 2008 BARKO 495ML with Trailer

2002 Q90 Franklin Dual Arch Skidder  
 2007 848G Deere Dual Arch Skidder  
 2 - Used Loader Trailers  
 1 - Delimber Trailer with CSI 143 Delimber

**Attachments:**  
 FD18, FD 22 Saw Head  
 FB20 Shear  
 2 - 42IP Slasher Saws  
 125" Deere Grapple off a 648G3

**Misc. Skidder Winches**



**New Joystick & Mechanical Seats**

[www.qamparts.com](http://www.qamparts.com)



Log Light Kits now available in Yellow & Red Rechargeable LED Bright Lights!  
**Call for a Dealer Near You!**

**"We Are Loggers Too!"**



**DODSON EQUIPMENT Co.**

P.O. Box 248 • Dodson, LA 71422 / New & Used Equipment Sales  
OFFICE PHONE: (318)628-3924 FAX: (318)628-7854 NIGHT PHONE (318)628-2909 (RICHARD)

**EQUIPMENT FOR SALE**

**LOADERS:**

- 2003 Husky 245 Joystick .....\$25,000
- 2006 Prentice 384 on trailer with delimeter .....\$70,000
- 2005 Timberjack 430BII on trailer with delimeter .....\$48,000
- 1994 Husky 335 Trailer mounted with delimeter .....\$22,000

**SKIDDERS:**

- 2004 648GIII 30.5 Tires .....\$42,000
- 2004 648GIII 43" Tires .....\$37,500
- 2006 Prentice 490, 30.5 Tires .....\$47,500
- 2005 CAT 525B Single Arch, 30.5 Tires .....\$45,000
- 2005 CAT 525B Dual Arch, 30.5 Tires .....\$50,000
- 2002 Franklin Q80C, 34" Tires .....\$32,500

**SHEARS:**

- (2) 2004 Timberking 340's, 28L tires, bunching heads .....\$42,000 each
- 2000 Hydro-Ax 570 FD22 head, 34" tires .....\$35,000
- 2004 Hydro-Ax 570 28L tires, Quadco bunching head .....\$37,500
- 2004 Timberking 350 bunching head, 34" 28L tires .....\$37,500
- Hydro-Ax 511E, 20" Koehring head, 34" tires .....AS IS \$13,000

**\*New Salvage Equipment Arriving Daily\***

*Parting out all brands of forestry equipment*

Please visit our updated web site: [www.dodsonequipmentco.com](http://www.dodsonequipmentco.com)



**STRICKS EQUIPMENT CO., LLC**

5700 Hwy 49E • Yazoo City, MS 39194  
[www.stricksequipment.com](http://www.stricksequipment.com)  
**662-746-8380**



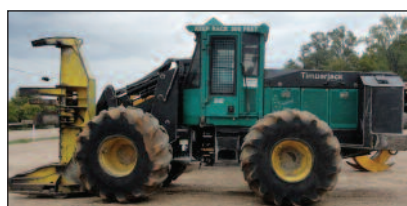
2004 John Deere 648GIII .....\$30,000



2006 Cat D5G LGP .....\$53,000



2006 Hydro-Ax 470 .....\$47,500



2002 Timberjack 840 .....\$38,000



2006 John Deere 748GIII, dual arch ...\$55,000



2005 Tigercat 724D .....\$65,000

- 2005 Tigercat 724D, 8557 hours, 5500 head, nice cutter .....\$65,000
- 2006 John Deere 748GIII dual arch, 35.5x32 tires, ready to work .....\$55,000
- 2005 John Deere 648GIII .....\$52,000
- 2004 John Deere 648GIII dual arch

- 1999 Cat 525 .....\$17,000
- Prentice 210D .....\$8,500
- CSI Reversible ground saw .....\$7,500
- FD 22 head, JD 843 or TJ 840 .....\$10,000
- Miscellaneous Cat 518 and 525 parts
- Several John Deere 444E, 444H loaders available
- Komatsu W300



**IRONMART™**

**Your Recycling & Forestry Used Equipment Source**



**2010 Cat 559B  
CSI 264 delimeter  
\$160,000**



**2010 Deere 648H  
torque converter  
\$169,000**

**We also BUY Used Recycling & Forestry Equipment**

**Skidders**

- (5) 06-10 Cat 525C \$75-165,000
- (2) 06-08 Cat 545C \$125-165,000
- 04/06 Cat 535B&C \$82-119,500
- (2) 06 Cat 535C \$119,000
- 03 Cat 525B \$39,900
- (2) 06/10 Deere 648H \$115-169,000
- 07 Tigercat 620C, new eng \$90,000

**Knuckleboom Loaders**

- 06-10 Cat 559 & 559B \$105-160,000
- 01 Cat 322BL \$109,000
- 03 Cat 325CFM \$75,000
- 08 Prentice 2384TMS \$40,000
- 04 Prentice 410E \$59,000
- (2) 04/05 Prentice 280TMS \$39,000
- 04 Prentice 410E CTR 450 \$59,000
- 01 Prentice 384TMS \$35,000

**Feller Bunchers**

- 10 Cat 553 \$165,000
- (2) 08/11 Cat 563, 22HC \$130,000
- 08 Cat 563, SH56 \$135,000
- 04 HX 470 \$40,000
- 06 HX 670 \$95,000
- 96 Hydro-Ax 511EX \$30,000
- (2) 08 Prentice 2470 \$125-130,000
- 07 Prentice 2570 - 3700 hrs \$95,000
- (2) 04 Timberking 350, 22HC \$65,000
- 04 Timberking 721B, 36" TG \$115,000

**Grinders-Chippers Debarkers**

- 07/09 DO 3060K/3080K \$350-590,000
- 07/09 Doppstadt SM720 \$180-220,000
- 07 Doppstadt AK230 \$225,000
- 03 Duratech 4012 \$170,000
- 08 Metso ST620, 384 \$130-325,000
- 03 Morbark 3600 \$155,000
- 98 Morbark 1300 \$115,000
- 96 Morbark 2755 \$349,000
- (2) 08 Peterson 5900 \$180,000
- 08 Peterson 5710C warr \$540,000
- 06 Peterson 6700 \$399,000
- (2) 06 Peterson 4710 \$440,000

**Mowers/Mulchers**

- 07 Fecon FTX140FM \$124,900

**Misc.**

- CSI DT2800 \$25,000
- 10 CSI Slasher Flat V bunk \$12,000
- 69 Rogers 40 ton lowboy-rebuilt \$24,000
- 02 White 35 ton \$20,000
- 04/05 Peterson 4800 \$99-199,000
- (3) 04/05 Peterson 4700B \$200-350,000
- (2) 00/02 Peterson 5000G \$125-275,000
- 07 Vermeer TG7000 \$280,000
- 08 Woodsman 337 \$235,000

**888.561.1115**

View our entire inventory online at

**IronMart.com**



# T & M EQUIPMENT, INC.

8324

**1-800-627-6870**  
912-367-7801 Ross Taylor

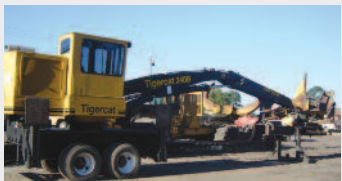
P.O. BOX 250 • HWY. 341 EAST  
BAXLEY, GA 31515

## NEW & USED EQUIPMENT FOR SALE

NEW & USED FORESTRY & CONSTRUCTION EQUIPMENT AND NEW & USED PARTS



2007 250B Trackloader, very clean, nice machine, 7196 hrs .....\$150,000



2006 Tigercat 240B, 9750 hrs, CSI delimeter 243 .....\$65,000



2005 Timberking TK 560, Riley delimeter trailer w/Hydraulic loading gear, 8729 hrs .....\$38,000



860 Stroke delimeter .....\$80,000



720D 90% rubber, new engine, 100 hrs on engine .....\$80,000



Morbark Model 22 chipper, 3 knife chipper, .....\$80,000



2007 Cat 535C Dual Arch skidder .....\$70,000



2004 Timberking 711B Track buncher, 410 Prentice Loader, New engine, new nice machine, 80% undercarriage, 9500 hrs .....\$85,000



410 Prentice Loader, New engine, new nice machine, 80% undercarriage, 9500 hrs .....\$30,000



2006 Mitsubishi dump truck, 13,000 miles, auto transmission .....\$35,000

- 2007 635C BOGGIE SKIDDER .....\$140,000
- 635 BOGGIE SKIDDER WITH NEW TRANSFER CASE .....\$115,000
- 822 TIGERCAT CUTTER W/SHOVEL BOTTOM, 5702 HEAD .....\$135,000
- 2006 TIGERCAT 720D, 40% RUBBER \$80,000
- 635C BOGGIE SKIDDER, 5600 HRS .....\$140,000
- 2002 5000G PETERSON CHIPPER .....\$185,000
- 2002 635 BOGGIE SKIDDER .....\$70,000
- D6M, 7700 HOURS .....\$50,000
- 2007 860C TIGERCAT SHOVEL, 5600 HRS., NEW BOTTOM .....\$165,000
- 2007 860c SHOVEL 5700 HRS .....\$150,000
- 2003 860B SHOVEL 8000 HRS .....\$75,000
- 2003 860 SHOVEL 8000 HRS .....\$75,000
- THUNDER BIRD TRACK LOADER
- 2000 MODEL NEW ENGINE NEW PUMPS HI RISE CAB .....\$70,000
- 2005 TIGERCAT 640C CLAM BUNK .....\$120,000
- 1999 820C TIMBCO NEW ENGINE LOG RACKS AND CLAM BUNK .....\$80,000
- 384 PRENTICE LOADER WITH DELIMBER HYD AND SLASHER HYDRAULICS .....\$25,000
- 653 JOHN DEERE, 85%, 6000 NEW ENGINE .....\$55,000



**JASON WELLS**  
jwells@striblingequipment.com

**(601) 939-1000**

# STRIBLING EQUIPMENT, LLC

2891

**2005 Deere 650JLGP**



S/N 115158, 3622 hrs .....\$68,000

**2008 Deere 437C**



S/N 169832, 90 Hrs .....\$160,000

**2006 Deere 648GIII**



S/N 605713, 8372 hrs .....\$75,000

**2006 Deere 648GIII**



S/N 606145, 7582 Hrs ..... \$75,000

**2005 Deere 437C**



S/N 013036, 7766 hrs .....\$66,000

**2009 Deere 643J**



S/N 624115, 4181 hrs .....\$100,000

**2002 Timberjack 460D**



S/N 582906, 11,056 hrs .....\$38,000

**2001 Timberjack 660D**



DF/DD/30.5 ..... SALE PRICE \$50,000



**JOHN DEERE**

[www.striblingequipment.com](http://www.striblingequipment.com)

**1-800-682-6409**

We buy used forestry equipment

## HOSE, FITTINGS & CRIMPERS

SERVING THE LOGGING INDUSTRY FOR 20 YEARS. WE CAN SAVE YOU MONEY.

**Tim Alligood**

Days or Nights: 1-252-341-9891  
email: tim.cavalierhose@yahoo.com

## FOR SALE

- 460 Timberjack Skidder—parting out
- 720 Tiger cat - parting out
- 410-D Prentice parts
- 210-E Prentice parts
- 742 Grapple
- 842 Grapple
- 30.5-32 Timberjack rims ...\$600 each
- 28.L.26 tires 40% tread.....\$600 each
- 4 300-66-25 tires on CAT rims 90% tread .....\$6,000 for set
- 3700-26 tires on John Deere rims .....\$1,500 each

**CALL JIM ELLIS**  
**(336) 451-5875**  
**or (336) 824-8769**

### IF YOU NEED

To buy or sell forestry, construction, utility or truck equipment, or if you just need an appraisal, contact me, Johnny Pynes with JM Wood Auction. Over 25 years experience.

Day 334-312-4136  
Night 334-271-1475  
or Email: johnwpynes@knology.net

## FOR SALE

### WOOD SHAVINGS PLANT

Jackson mill—  
saw dust driver, etc.  
*Good shape, price negotiable*  
**Andrew 573-380-1998**



### WORK READY USED PARTS RIGHT HERE!

- \*\* CAT 5-SERIES: 174-6133 Pillow Block Bearing.....\$175
- \*\* John Deere 648GIII: AT199100 Rear Drive Shaft .....\$450
- \*\* Tigercat 7 Series: 91546 Axle Support .....\$500
- \*\* Tigercat 6-Series: 4700B Grapple Rotate Output Gear .....\$350
- \*\* 170/C7F: 1026226 Flexible Connector (Exhaust) .....\$75

#### CONTACT:

**478.550.2330 - Keith**  
**478.256.4063 - Gary**  
**478.550.2375 - RJ**  
**FORESTRYPARTSRESOURCE.COM**

visit us online:

[www.southernlogginetimes.com](http://www.southernlogginetimes.com)

# THANK YOU.

We want to say *Thank You* to all of our advertisers. You had a choice and you chose *Southern Loggin' Times.*

# WANTED DEAD OR ALIVE



## 1960-2005 MACK TRUCKS PAYING TOP \$DOLLARS

ALSO OFFERING \$200 REWARD FOR INFORMATION LEADING TO THE PURCHASE OF A TRUCK

CALL SPARR TRUCK PARTS • 866-448-6322



# TIDEWATER EQUIPMENT CO.

**MAC McLAURIN • 910-610-7029**

Call or visit our website: [www.tidewaterequip.com](http://www.tidewaterequip.com)

### SKIDDERS

- (4) CTR 950 D/A and S/A .....\$25,000-\$70,000
- 2004 CAT 525B .....\$46,000
- 2005 CAT 525B .....\$79,200
- 2007 CAT 525C .....\$70,000
- 2009 CAT 525C .....\$131,000
- 2003 Deere 648GIII D/A .....\$25,500
- 2008 Deere 648H D/A .....\$100,000
- 2006 Deere 748GIII D/A SWEDA .....\$81,250
- 2003 Deere 848G .....\$33,900
- 2004 Tigercat 620 D/A .....\$72,500
- 2005 Tigercat 620C S/A SWEDA .....\$95,000
- 2005 Tigercat 620C D/A .....\$85,000
- 2006 Tigercat 620C S/A .....\$93,500
- 2001 Tigercat 630B D/A .....\$40,000
- 2004 Tigercat 630C S/A .....\$75,000
- 2005 Tigercat 630C D/A SWEDA .....\$60,000
- 2006 Tigercat 630C D/A .....\$85,000
- 2003 Timberjack 460D .....\$45,000
- 2004 Timberjack 460D .....\$58,500
- 2005 Timberjack 460D .....\$57,000

### FELLERBUNCHERS

- 1995 Deere 643 Saw .....\$22,500
- 2005 Deere 643H .....\$75,000
- 2002 Hydro-Ax 411 Ex/20 Saw .....\$38,000
- 2005 Hydro-Ax 670 .....\$62,000
- 2009 Prentice 2470 .....\$112,500
- 2005 Tigercat 718/5500 .....\$94,000
- 2005 Tigercat 720D/5600 Saw .....\$82,000
- 2005 Tigercat 726D/4702 saw .....\$82,500
- 2004 Tigercat 822 .....\$144,900
- 2002 Timberjack 608S .....\$63,750
- 2004 Timberking 340 .....\$40,000

### LOG LOADERS

- 1998 Barko 160D/CTR 400 .....\$21,000
- 2006 Deere 437C/Rotobec .....\$72,500
- 2007 Prentice 2280 .....\$81,000
- 1999 Tigercat 230B/CTR 400 .....\$10,000
- 2005 Tigercat 230B/143 CSI .....\$68,500
- 2003 Tigercat 230B/CTR .....\$45,000
- 2007 Tigercat 234 .....\$100,000
- 2008 Tigercat 234 .....\$125,000
- 2005 Tigercat 240B .....\$52,500

- 2005 Tigercat 244 .....\$50,000
- 2005 Timberking/CTR 450 .....\$35,000

### INDUSTRIAL EQUIPMENT

- 2009 Conehead 570 .....\$65,000
- 2002 Morbark 30NCL Chipper .....\$187,500
- 2009 Morbark 30/36 .....\$162,500
- 2006 Morbark 6600 1050HP .....\$271,900

### MISCELLANEOUS

- Assortment of tires and rims for Deere/Tigercat
- CTR 314 and 400 Delimiters .....\$1,000 to \$18,000
- New/Used Magnum and FECON Mulcher heads
- (3) K Saws .....\$5,000 to \$10,000
- Tigercat Shears and Saws ...\$2,500 to \$20,000

### LIQUIDATION SALE

New Chippers  
New Mulching Machines  
Starting under \$2899/month

View our web site for over 200 listings with newly reduced prices and pictures





**"Where the forestry customer comes first."**

[www.forestryfirst.com](http://www.forestryfirst.com)

Brian Nielson (Cell) 803.960.1613 | Jesse Sewell (Cell) 803.807.1726



2011 CAT 525C - \$194,900



05 CAT 525B - \$75,000



07 Tigercat 234 - \$79,500

2011 CAT 525C DA - DP, Grapple, Winch, 30.5 Tires, 1900 hrs, Like New	\$194,900
2009 CAT 525C DA Skidder wWinch, Grapple, 3900 hrs, Very Nice	SOLD
2008 CAT 545C DA Skidder with Grapple, Winch, 35.5 Tires, 7400 hrs	\$119,500
2007 Tigercat 620C Single Arch Skidder, Grapple, Winch, 30.5 Tires, 7500 hrs	Call
2007 CAT 535C Dual Arch Skidder, Grapple, Winch, 30.5 Tires, 5100 hrs	\$129,500
2007 CAT 545C DA Skidder, Grapple, Winch, 30.5 tires, 5900 hrs	Call
2006 CAT 545 DA Skidder, Grapple, Winch, 35.5 Tires, 5200 hrs	\$125,000
1999 CAT 517 Track Cable Skidder, OROPS, New Undercarriage, 3700 hrs	\$114,900
1996 CAT 515 Cable Skidder, 23.1 Tires, 7100 Hours, Excellent Condition!	\$44,900
1996 Timberjack 460 Skidder, 30.5, Winch, 110 Esco, Unkn Hrs	SOLD



08 Peterson 5900 w4500 hrs



98 Morbark 30/36 Chipper



Peterson 5000G & H Chippers

(2) 07 & 08 Tigercat 718/E Fellerbunchers, 20" HiCap Saw, 30.5 Tires, low hrs	Call
2006 Tigercat 720D Fellerbuncher, 5500 Sawhead, 30.5 Tires, 6300 Hrs	Call
2006 Tigercat 720D Fellerbuncher, 5500 Sawhead, 30.5 Tires, 9300 Hrs	Call
2006 CAT 553 Fellerbuncher, 20" HiCap Saw, 28L Tires, 4900 hrs	\$92,500
2003 Timberking 370 Fellerbuncher w24" Saw, 28L Tires, 6000 hrs	\$52,000
2002 Timboo 445D Track Fellerbuncher, 22" Quadco 360 Saw, 24" SG Pads	\$159,900
2000 Hydro-Ax 411EX with FECON BH120, 28L Tires	\$79,500
1999 Timberjack 850, 8.3L Cummins (fresh), 36" TGP Pads,	\$82,500
1993 Timboo 425B, 6BTA Cummins (fresh) 32 TGP, 30" Barsaw	\$27,900



02 TI 445D w22" Saw, Nice!



08 Deere 848H - \$132,500



2010 Delimbinator - \$79,500

2007 Tigercat 234 Knuckleboom Loader, CTR 426, 53" Grapple, 9700 hrs	\$79,500
2005 Tigercat 240B Knuckleboom Loader, CSI Delimber, 53" Grapple	\$39,500
2005 Timberking 575DK TMS Loader, CTR 450, 55" Grapple, 3400 hrs	\$85,000
2008 Peterson 5900 Chipper, 3 Knife, Key System, 4400 Hrs, One Owner	Call
2006 Woodsman 334 Chipper, New Drum Update, 974Hrs	\$126,500
2006 Trelan 23L Chipper, CAT 3412, 3-Knife, 1200 hrs	\$285,000
97 & 98 Peterson 5000G, 850 hp, 2-Flail, 3-Knife, Multiple Units	Call
(2) 09 Peterson 5000G & H Units, 1000hp, 3 Flail, 4000 hrs	Call
2008 Sneller 170 Mulching Head with 300 Hrs, Like New, Fits CAT 320	\$65,000
2002 CAT 525B/535B Bunching Grapple (ESCO 123")	\$5,900
Tigercat 5701 Sawhead, New Disc, Bearing & Shaft	\$12,400
CTR V-Bunk and Flat Bunk, Extended and Reversible Ground Saws	Call

To see our full inventory, including Pictures, Videos, Specs, Inspections, call or visit us online at [www.forestryfirst.com](http://www.forestryfirst.com).